



Ashdale Grove

Stanmore

£725,000

An Imposing Semi Detached Bungalow occupying a wide corner plot in this much sought after cul de sac.

The property offers spacious accommodation throughout with three bedrooms, two bathrooms and two spacious reception rooms plus a conservatory and a well fitted kitchen. Outside there is forecourt parking and detached garage to the rear of the south facing garden.

Harrow Council tax band E

Viewing

Please contact our Davidson Frost-Wellings Office on 020 8954 8806 if you wish to arrange a viewing appointment for this property or require further information.

- Three bedrooms
- Two bathrooms
- Detached garage
- Forecourt parking
- Fitted kitchen
- Sought after location



3



2

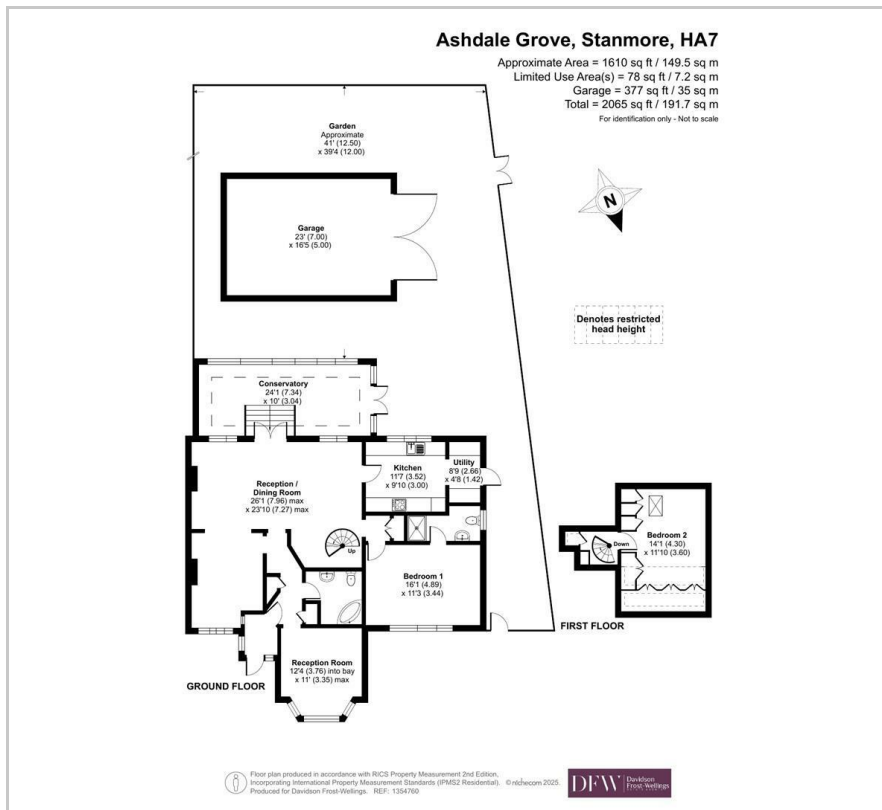


2

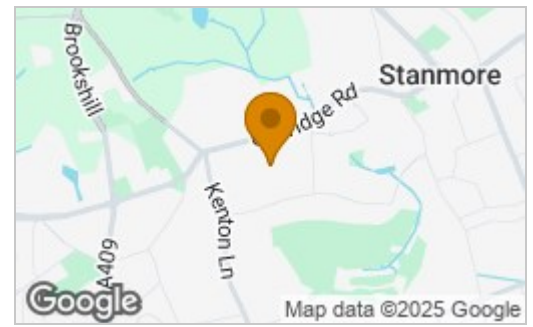


D

Floor Plan

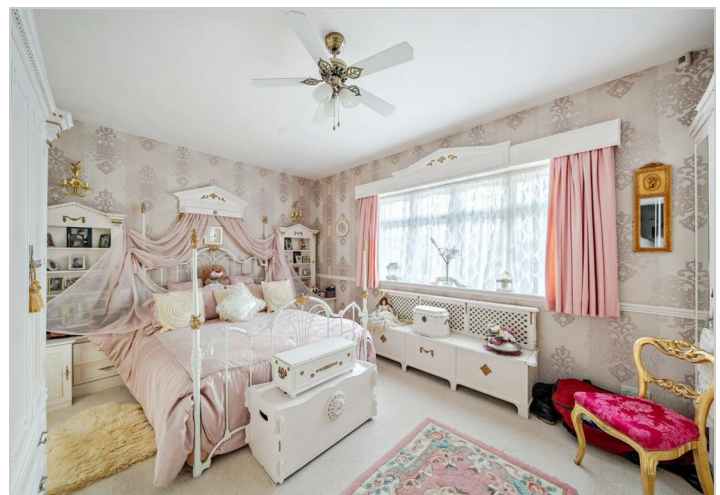


Area Map



Energy Efficiency Rating

	Current	Potential
Very energy efficient - lower running costs		
(92 plus) A		
(81-91) B		
(69-80) C		
(55-68) D		
(39-54) E		
(21-38) F		
(1-20) G		
Not energy efficient - higher running costs		
	57	83
England & Wales	EU Directive 2002/91/EC	



These particulars, whilst believed to be accurate are set out as a general outline only for guidance and do not constitute any part of an offer or contract. Intending purchasers should not rely on them as statements of representation of fact, but must satisfy themselves by inspection or otherwise as to their accuracy. No person in this firm's employment has the authority to make or give any representation or warranty in respect of the property.